

# An Overview

## Civil Society Human and Institutional Development Programme

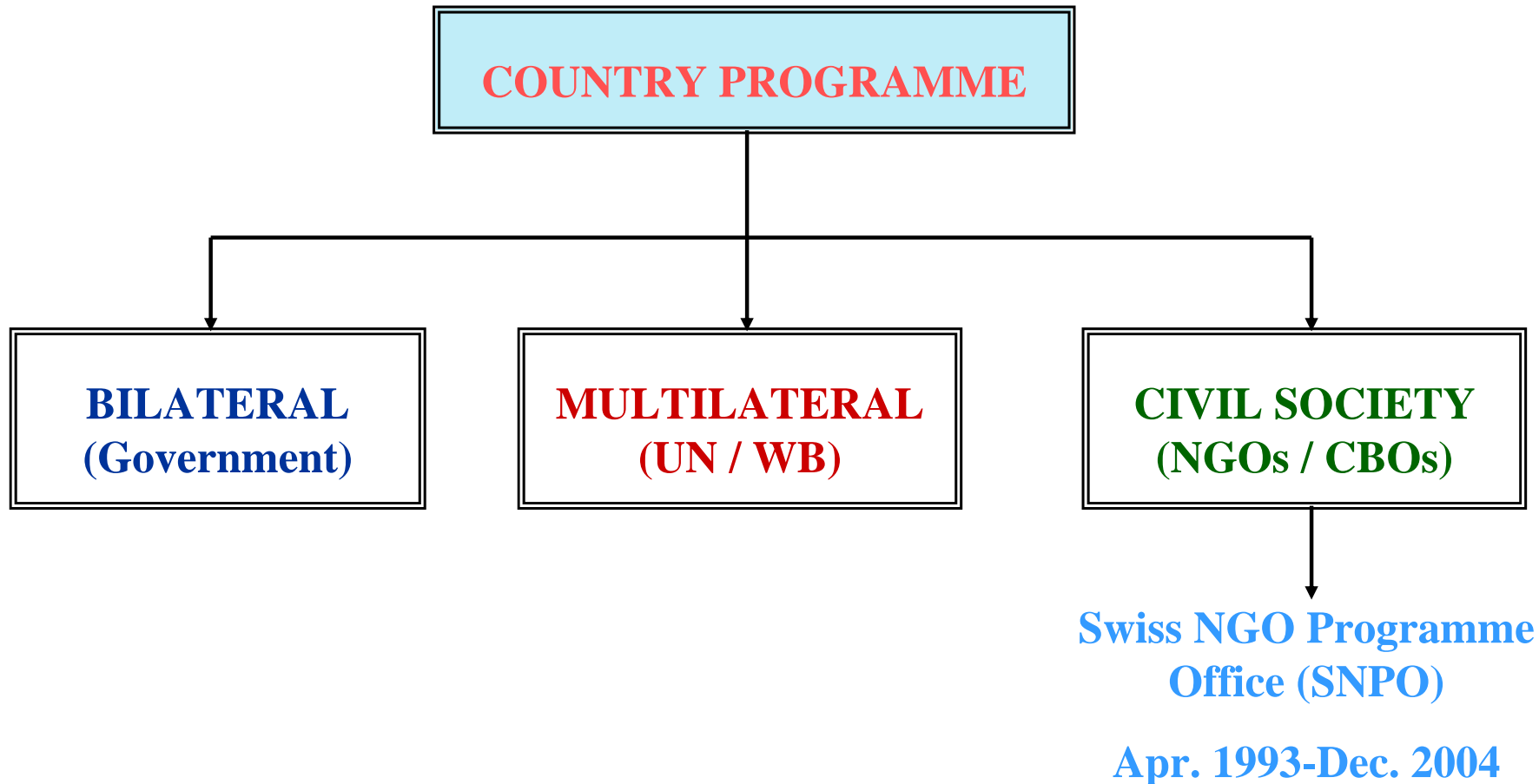
*A Company set up under Section 42 of the Companies Ordinance, 1984*





# SWISS PROGRAMME

## Swiss Agency for Development & Cooperation (SDC)



# Role of CHIP As A Swiss NGO Programme

1. Fund Management for facilitating Civil Society organizations in designing & implementing development projects in favoured sectors;
2. Monitoring and evaluation of projects;
3. Strengthening of Civil Society Organization to become Local Training and Resource Centers to extend services to a wider outreach;
4. Consolidation of learning and case studies for wider sharing.

# CHIP (NGO) Network

NWFP		Sindh	Punjab
1.1: KK	1.16: MRSTAH	2.1: URC	3.1: PIEDAR
1.2: HRMDC	1.17: SWS	2.2: LHRLA	3.2: LOK REHAS
1.3: SBRC	1.18: RDP	2.3: TRDP	3.3: ROZAN
1.4: EPS	1.19: WASFD	2.4: IRC	3.4: FWCA
1.5: A.A.	1.20: ABKT	2.5: SAFWCO	3.5: HEAL/ABES
1.6: Pak-VDP	1.21: SERVE	2.6: SAIBAN	3.6: ALBBS
1.7: SWWS	1.22: ODAC	2.7: NGOCC	3.7: AIM
1.8: WWF-P	1.23: RDO	2.8: OPP	3.8: BEDARI
1.9: Humanitarian	1.24: DEWA	2.9: SCOPE	3.9: YCHR
1.10: BRC	1.25: DITSWC	2.10 SINGOF	3.10: DCHD
1.11: CMDO	1.26 FPAP	2.11 OXFAM	3.11: KASHF
1.12: KKT	1.27 PAK CDP	2.12 PWDS	
1.13: MCOC	1.28 PERD		
1.14: DWAY	1.29 SESWA		
1.15: TZKT	1.30 HDO		

**As of January 2005**

CHIP became an Independent Organisation

Registered under Section 42 of the Companies Ordinance 1984

# Civil Society Human and Institutional Development Programme

*A Company set up under Section 42 of the Companies Ordinance, 1984*



## Vision

- An Aware and Organised Society Capable of Realising its Own Development

## Mission

- Enabling individuals and organisations to make more effective and efficient development efforts through the provision of value-led Human & Institutional Development (HID) services

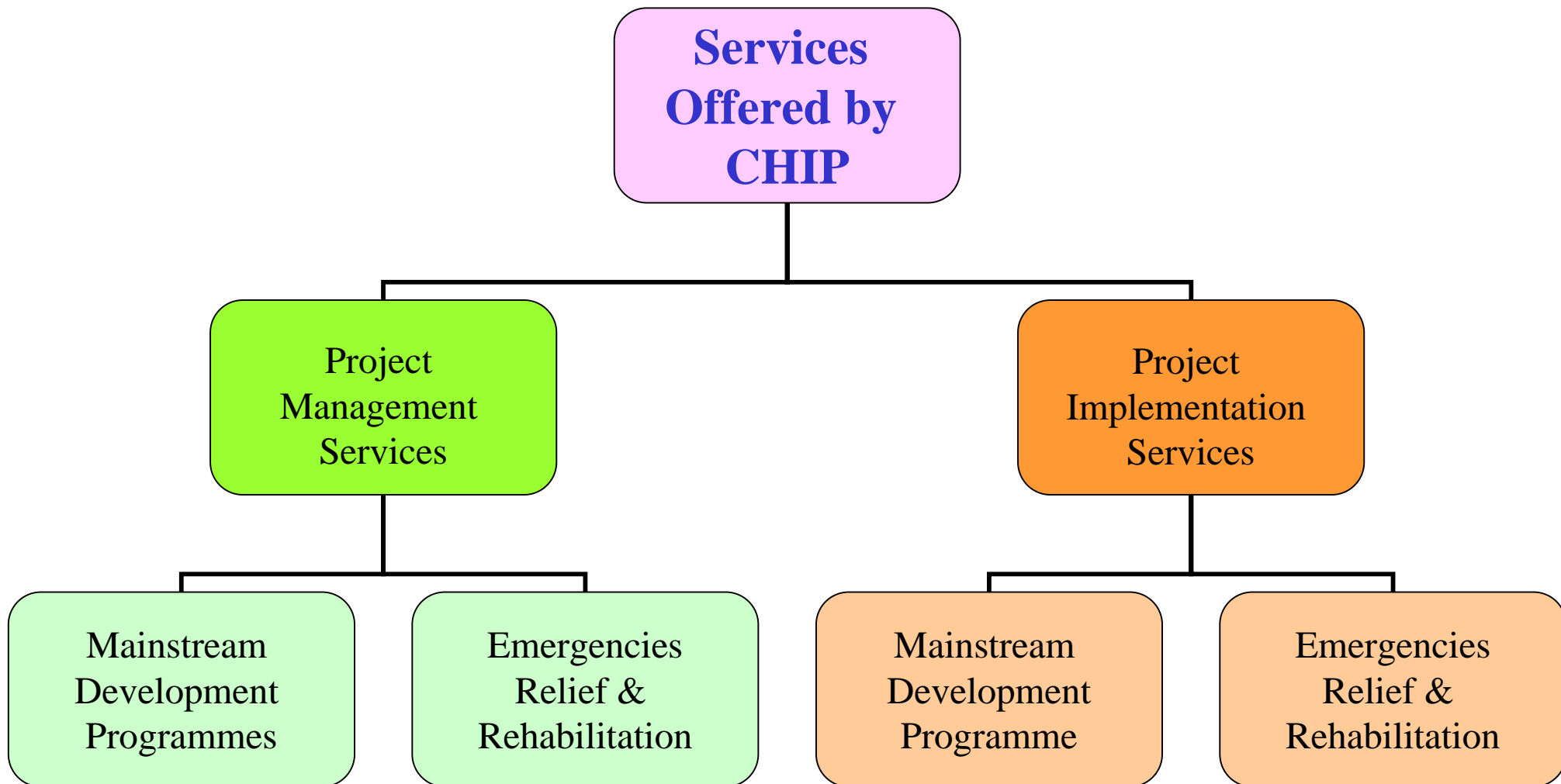
## Values

Practice and Promote

- Honesty, Dedication and Commitment

# CHIP Offices and Outreach

Office Type	Location (Province/District)	Number of Partner CBOs/NGOs	Number of Villages
<b>Head Office</b>	Islamabad Capital Territory	8 NGOs	
<b>Field Offices</b>	Swabi - NWFP	12 CBOs	50
	Sohawa Punjab	60 CCBs/WOs	40
	Skardu Northern Areas	9	43
	Sanghoi - Punjab	15 CCBs/WOs	15



# Focus of Ongoing Programmes

Thematic Focus	Approaches
<ul style="list-style-type: none"> <li>• Disability</li> <li>• Health</li> <li>• Water</li> <li>• Sanitation</li> <li>• Human Rights</li> <li>• Education</li> <li>• Natural Resource Management</li> <li>• Livelihood development</li> </ul>	<ul style="list-style-type: none"> <li>• Gender mainstreaming</li> <li>• Human and Institutional Development</li> <li>• Inclusive development</li> <li>• Community Organizations</li> <li>• Strengthening of Local Government System</li> </ul>

# Ongoing Programmes

<b>Disability</b>	<p>Partnership With Dark &amp; Light Blind Care &amp; Light For The World</p> <p>Partnership with Sightsavers International and DFID</p>	<p>Rehabilitation and Inclusion of People with Disability in District Skardu, Northern Areas</p> <p>Inclusive Development through mainstreaming people with disabilities in social mobilization in District Jehlum, Punjab Province</p>
<b>Water</b>	<p>Partnership With Misereor</p>	<p>Rehabilitation of Drinking water wells, Dug wells, Gravity Flow schemes and Hand pumps</p>
<b>Sanitation</b>	<p>Partnership With Misereor &amp; DFID</p>	<p>Inclusive latrines for disabled and poor women, household latrines, school latrines</p>
<b>Human Rights</b>	<p>Partnership With UNDP &amp; Muslim Care</p>	<p>Local Support Mechanism Strengthened to Correspond Issues of Violence against Women in Tehsil Sohawa, District Jehlum, Literacy Centers for Child Labour</p>
<b>Education</b>	<p>Partnership With Muslim Care UK &amp; Individual Philanthropists</p>	<p>Community Based Primary Schools, Teachers Training, Adult Literacy, Scholarship for poor students through universities and Extra curricular activities</p>

# Ongoing Programmes

<b>Natural Resource Management</b>	Partnership with Misereor	Training on improved farming practices, Training on livestock management, demonstration plots, check dams, forestation, kitchen gardening
<b>Livelihood development</b>	Partnership with Misereor and DFID	Vocational training centers, skills training, in kind support to set up small businesses e.g. barber shop, mason shop, tire puncture equipment, swing machines
<b>Health</b>	Partnership with Ministry of Health (Gavi Alliance)	Training of skilled birth attendants, training of Basic Health Unit Staff, Health Workers, awareness raising for immunization
<b>Emergencies</b>	Partnership with Misereor & CWS, Individual Philanthropists	Relief and Rehabilitation

# Geographical Outreach

Province	Districts
NWFP	Swabi, Swat, Lower Dir, Buner
Punjab	Jehlum, Rawalpindi
Sindh	Badin
Baltistan-Gilgit	Skardu